



# Cornish Seal Sanctuary



## Habitats and Marine Mammals

Answer Book

# Contents

<b>Introduction</b> .....	3
<b>True or False</b> .....	4
<b>Habitats</b> .....	5
<b>Marine Mammals</b> .....	9
<b>What's your favourite habitat?</b> .....	11
<b>Save Squidge!</b> .....	12
<b>Habitats Word Search?</b> .....	13
<b>Learn More at The Cornish Seal Sanctuary</b> .....	14
<b>Support the Sanctuary</b> .....	15

# Introduction

The Cornish Seal Sanctuary is a charity that rescues and rehabilitates seal pup from around the Cornish Coastline.

Did you know that we've been rescuing sick and injured pups since 1958?!

The Sanctuary started in the winter of 1958 when a baby seal, only a few hours old, was washed up on the beach at St Agnes. Ken Jones lived with his wife Mary next to the beach, he picked up the pup and took it back to his small garden.

For many years, he ran a rescue centre for seals, with just one pool, at St Agnes. The news of his work with seals spread, and he received more and more calls about injured seals. Ken realised he needed more room, as the single pool at St Agnes was just not big enough. Ken had to find a larger site to build a permanent rescue centre and was offered land by the beautiful river Helford in Gweek.

Each season, the Sanctuary rehabilitates between 50 to 70 seal pups each costing on average, £2,000 to be rehabilitated. The Sanctuary also provides a permanent home to animals that need special care from their team of marine animal experts.

When visiting the Sanctuary, you can experience wonderful marine animals up close and personal and learn all about their individual stories.

There's plenty to learn too! We offer guided tours, school workshops and school holiday clubs. Plus, you can head over to Discovery Cove, mixing learning with play, you can enjoy a variety of activities which are both fun and educational.

**Hi! My name's Lily!**

**I am the learning buddy for the  
Cornish Seal Sanctuary.**

**If you see me in your workbook, I  
might have a handy hint for you!**



# True or False

How much do you know about our oceans? Answer true or false to the facts below.

1) Nearly half of the Earth is covered by oceans.

True

False

The oceans actually cover 70% of the Earth's surface!

2) We know about millions of marine life forms.

True

False

3) More than half of all life on Earth lives in the oceans.

True

False

4) We know more about space than we do about the deep ocean.

True

False

5) Nearly four billion kilograms of rubbish are dumped into our oceans every year.

True

False

We actually dump six billion kilograms of rubbish and most of this is plastic

6) Half of our oceans are protected.

True

False

Only 4% of our oceans are protected.

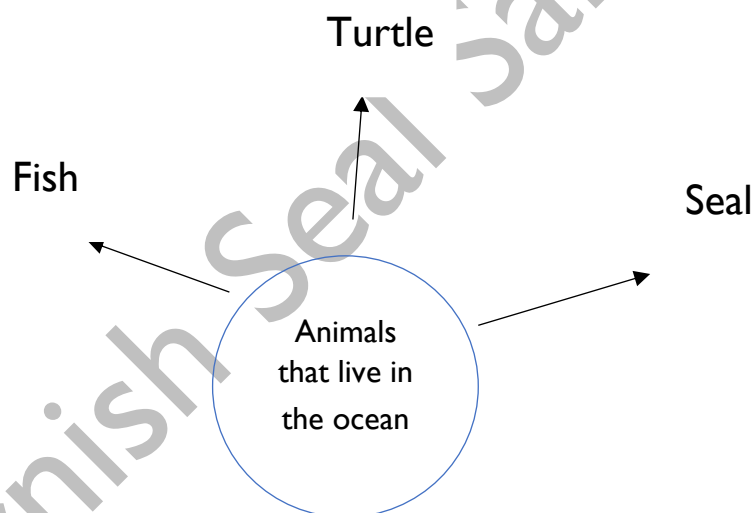
# Habitats

What is a habitat?

*A habitat is the home of a plant or animal*

Our oceans are one of our most important habitats. Lots of creatures call it home.

How many can you name? Add your answers to the mind map below:



The Sanctuary is home to lots of animals that live in the ocean



**Animals need four key things from their habitats. What are they?**

*Air*

*Food*

*Water*

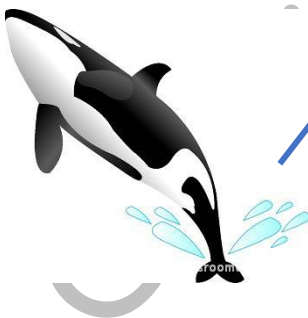
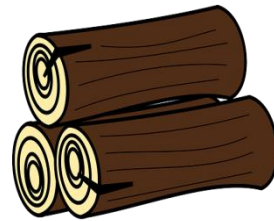
*Shelter*

**What animals would live in this habitat? Can you draw them on the picture?**



*Examples could be: birds, rabbits, foxes, mice, insects etc*

Can you match the animal to its habitat?



**Extra challenge! Pick an animal found at the Cornish Seal Sanctuary and explain why its habitat is the best place for it to live.**



Animal: .....

Habitat: .....

Why is this habitat the best for this animal?

*Answers could include where the animal finds food/water, the kind of shelter the habitat provides. The weather or temperature and how suited their bodies are for it etc.*

Remember! Animals need certain things from their habitat to survive.  
Not all habitats will suit all animals.





# Marine Mammals

Our oceans are amazing places with millions of life forms living there.

When we think of ocean animals we tend to think of fish but there are lots of other animals who call the oceans home too!

One of these groups of animals is called marine mammals.

## Can you describe what a mammal is?

A mammal is *an animal with a backbone/ has live young / has fur*

## What do you think a *marine mammal* would be?

A marine mammal is *a mammal that lives in the sea*



Fish and marine mammals might share a habitat, but they are quite different!

Can you sort the features below into marine mammals and fish?

Marine Mammal	Fish
<i>Holds oxygen in their lungs</i>	<i>Takes in oxygen using gills</i>
<i>Can have a blowhole</i>	<i>Lays tiny eggs called globs</i>
<i>Has fur or very fine hair</i>	<i>Cold Blooded</i>
<i>Warm blooded</i>	<i>Is covered in scales</i>
<i>Their babies are born alive</i>	<i>Moves using spines and fins</i>

Takes in oxygen using gills	Has fur or very fine hair
Lays tiny eggs called globs	Warm blooded
Holds oxygen in their lungs	Their babies are born alive
Can have a blowhole	Is covered in scales
Cold Blooded	Moves using spines and fins

# What's your favourite habitat?

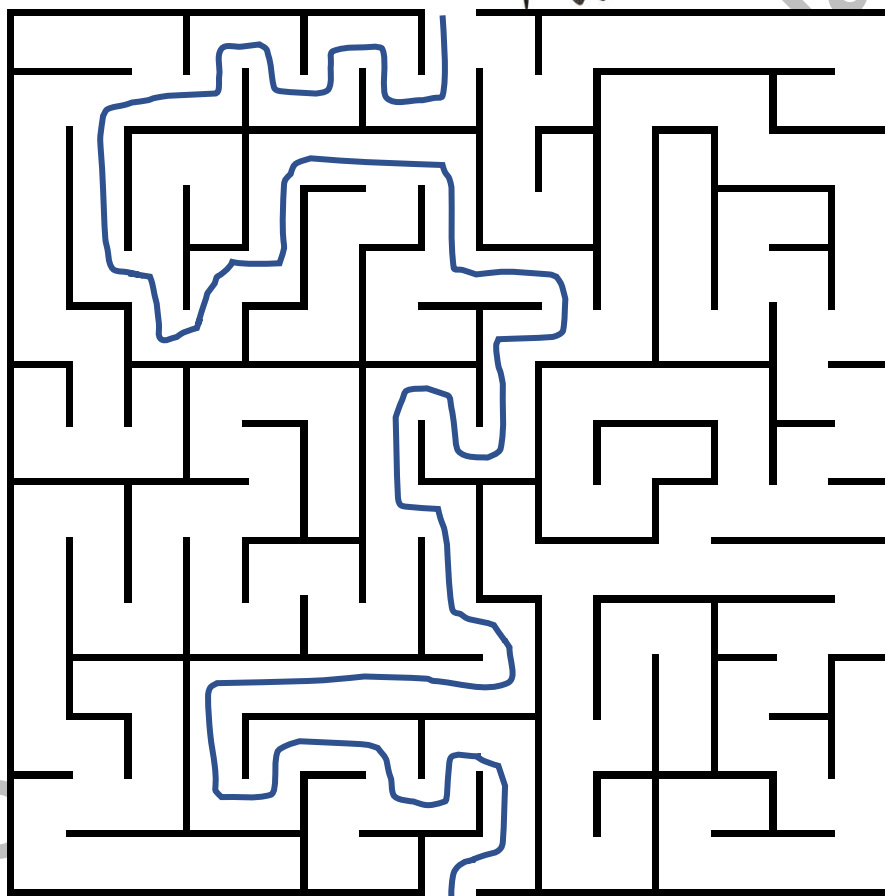
Use this space to draw your favourite space or place to spend time in?

Cornish Seal Sanctuary

# Save Squidge!

Squidge has waddled off and got lost! Can you help him find his way back to the Cornish Seal Sanctuary?

Start!



Home!



# Habitats Word Search?

Can you find all the words hiding in the puzzle?



## Habitats

F	E	T	B	T	D	A	M	M	A	L	M	P	L
O	T	A	E	N	A	N	A	H	S	P	A	O	A
R	O	A	A	D	W	I	M	S	A	S	R	H	K
E	T	S	C	U	E	M	M	R	E	E	E	S	E
S	R	T	H	B	H	A	A	T	B	T	P	T	T
T	O	H	M	U	U	L	L	D	S	T	T	E	T
T	P	F	B	H	R	R	T	H	S	R	I	P	A
E	I	L	P	E	H	L	R	A	H	E	L	P	R
N	C	R	L	T	L	A	T	O	E	E	E	I	I
M	A	S	D	E	S	E	R	T	W	F	A	E	L
E	L	E	T	C	H	K	T	T	N	A	L	P	A
O	E	E	R	M	I	S	H	A	B	I	T	A	T
B	U	S	H	K	R	A	P	E	S	U	O	H	I
A	T	E	M	P	E	R	A	T	E	S	I	E	A

ANIMAL  
BURROW  
SHELL  
SAND  
LAKE  
LEAF  
PLANT  
DESERT  
PARK  
BUSH  
REPTILE  
FOREST  
TEMPERATE  
PET SHOP  
TROPICAL  
BEACH  
MAMMAL  
TREE  
HABITAT  
HOUSE

# Learn More at The Cornish Seal Sanctuary



There's plenty more to explore. Combining active learning with fascinating talks and an opportunity to have a close encounter with a variety of animals.

## Want to learn more? Calling All Ocean Lovers!

Take part in jam packed sessions during School Holidays and discover all about:

- Seals and Sea Lions and the environment they live in
- Seal pup rescue, rehabilitation and release
- Our resident animals and how we care for them
- Local wildlife
- Marine conservation

# Support the Sanctuary

Enjoyed learning with The Cornish Seal Sanctuary?

Did you know that we're a charity?

Every year, we rescue seal pups in need of care from around the coastline. Each pup costs an average of £2,000 to rehabilitate and that doesn't include those that need specific operations. We also care for lots of animals who can't be released.



We are grateful for any donation received. Your money could go a long way to helping our animals get the care they really need.

To help text SEAL 5 to 70085 to make a £5 donation.

Or donate on our website: [sealsanctuary.sealifetrust.org](http://sealsanctuary.sealifetrust.org)

Thank you for your support, we would not be able to do this vital work without you!

The Cornish Seal Sanctuary is a © SEA LIFE Trust Sanctuary

SEA LIFE Trust is a charity registered in England & Wales (1175859) and company limited by guarantee (10833916); SLT Sanctuary Trading Limited (11160544) is a limited company; all are registered at Link House,

25 West Street, Poole, BH15 1LD. Images © SEA LIFE Trust

Created by the Cornish Seal Sanctuary – SEA LIFE Trust

